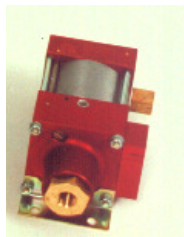


Air Amplifier	MPLV4 Order code: 3220.0331
PLV series: GPLV2-SPLV2-MPLV2-MPLV4 (Pressure ratio: 1:2 resp. 1:4)	

Short description

MAXIMATOR PLV series are suitable for the compression of shop air. Due to their drive concept they can increase the pressure of an existing shop air line in ratios 1:2 resp. 1:4. Only shop air is needed to operate them.

Benefits

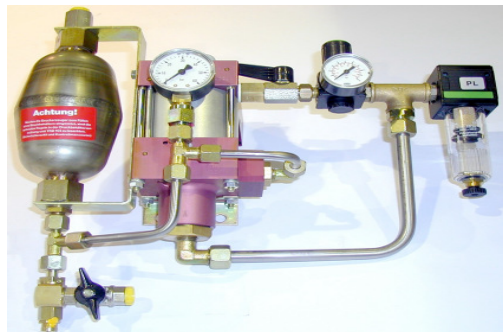
- Direct pressure increase for a single application
- No energy consumption by the air amplifier when the outlet pressure is reached
- Non electrical installation, so application in ex areas possible

Technical data:

Inlet pressure:	2 to 10 bar	Connections:	
Outlet pressure:	4 to max. 40 bar	Inlet:	3/8" BSP
Pressure ratio:	1:4	Outlet:	1/2" BSP
Medium:	Compressed air, nitrogen	Air drive:	3/8" BSP
Maximum operating temperature:	60 °C		
Weight:	2.2 kg		
Wetted material of construction:	All wetted parts are of light metal resp. stainless steel. Dynamic seals are of special wear resisting PTFE (Teflon).		
Accessories:	Air control unit „C1“, comprising of combined filter pressure regulator, control pressure gauge and shut-off valve		
Option:	Air drive port: 1/2 BSP		

Packaged Amplifier Systems:

MPLV4 / 0.75 liter / 40 bar



Comprising:

- Air amplifier MPLV4
- Filter regulator with shut-off valve
- Receiver 0.75 Liter, 40 bar
- Safety valve 40 bar
- Outlet pressure gauge 0-60 bar, dia. 50 mm
- Drain valve

The system comes completely mounted, pressure tested and ready for connection.

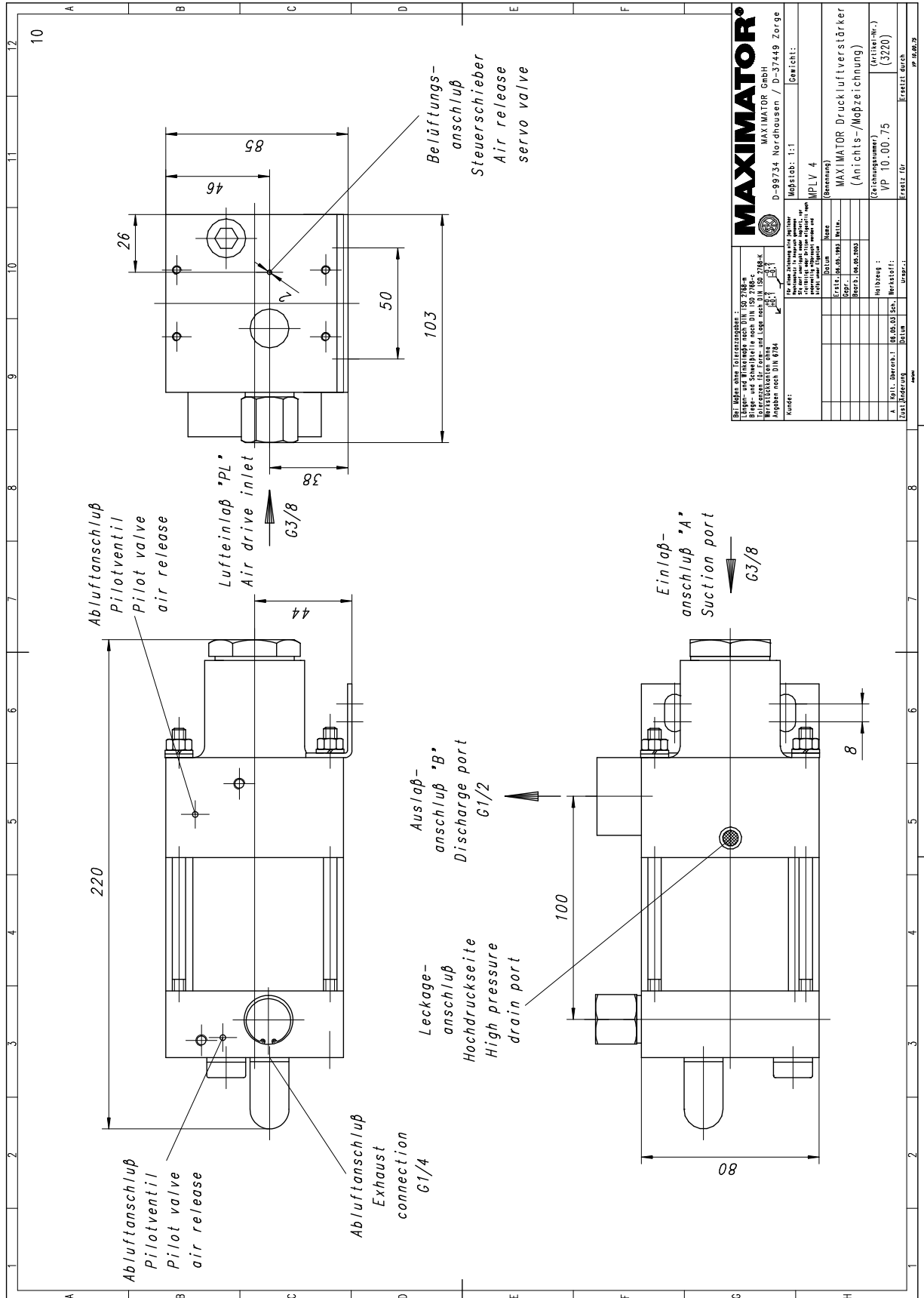
Order Code: 3230.0345/AP201.068.01

Other available stations:

- MPLV4/5 Liter/40 bar:
Order code: 3230.0589/AP201.154.00

Please consult factory for more information.

All technical and dimensional information subject to change. All General Terms and Conditions of sale, including limitations of our liability, apply to all products and services sold



Performance Graph MPLV 4

For air demand add together outlet flow and air consumption

